



HOLLOW WARES


Lotion Bowl

- 18-101-05 Ø 80x40mm
- 18-102-10 Ø 105x45mm
- 18-103-15 Ø 115x50mm
- 18-104-20 Ø 130x55mm
- 18-105-25 Ø 150x60mm
- 18-106-30 Ø 160x60mm
- 18-107-35 Ø 180x80mm
- 18-108-40 Ø 200x90mm
- 18-109-45 Ø 240x100mm
- 18-110-50 Ø 250x110mm
- 18-111-55 Ø 270x105mm
- 18-112-60 Ø 300x110mm
- 18-113-65 Ø 330x125mm
- 18-114-70 Ø 360x135mm
- 18-115-75 Ø 390x145mm


Lotion Bowl

- 18-116-05 Ø 80x40mm
- 18-117-10 Ø 105x45mm
- 18-118-15 Ø 115x50mm
- 18-119-20 Ø 130x55mm
- 18-120-25 Ø 150x60mm
- 18-121-30 Ø 160x60mm
- 18-122-35 Ø 180x80mm
- 18-123-40 Ø 200x90mm
- 18-124-45 Ø 240x100mm
- 18-125-50 Ø 250x110mm
- 18-126-55 Ø 270x105mm
- 18-127-60 Ø 300x110mm
- 18-128-65 Ø 330x125mm
- 18-129-70 Ø 360x135mm
- 18-130-75 Ø 390x145mm


Round Bowl

- 18-131-05 Ø 150 x 70 mm
- 18-132-10 Ø 160 x 65 mm
- 18-133-15 Ø 220 x 70 mm
- 18-134-20 Ø 250 x 95 mm
- 18-135-25 Ø 260 x 130 mm
- 18-136-30 Ø 300 x 105 mm
- 18-137-35 Ø 320 x 140 mm
- 18-138-40 Ø 380 x 125 mm
- 18-139-45 Ø 400 x 150 mm


WASH BASIN

- | | Size |
|-----------|--------|
| 18-140-05 | 80 mm |
| 18-141-10 | 100 mm |
| 18-142-15 | 125 mm |
| 18-143-20 | 150 mm |
| 18-144-25 | 200 mm |
| 18-145-30 | 250 mm |
| 18-146-35 | 300 mm |
| 18-147-40 | 350 mm |
| 18-148-45 | 400 mm |


Round Bowl

- 18-149-05 Ø 110 x 25 mm
- 18-150-10 Ø 110 x 40 mm


BOWL

- | | Size |
|-----------|--------|
| 18-151-05 | 80 mm |
| 18-152-10 | 100 mm |
| 18-153-15 | 125 mm |
| 18-154-20 | 150 mm |
| 18-155-25 | 200 mm |



Universal Tray

18-156-05 230x155x30mm
 18-157-10 300x175x30mm
 18-158-15 300x175x40mm
 18-159-20 350x240x36mm
 18-160-25 470x320x50mm



Instrument Tray (shallow)

18-161-05 210x160x10mm
 18-162-10 240x180x10mm
 18-163-15 300x210x10mm
 18-164-20 350x245x16mm
 18-165-25 350x280x16mm
 18-166-30 385x265x16mm
 18-167-35 430x295x16mm



Instruments Tray With Out Cover

18-168-05 150X100x25mm
 18-169-15 200X100x50mm
 18-170-20 200X150x40mm
 18-171-25 220X120x50mm
 18-172-30 250X200x40mm
 18-173-35 250X200x50mm
 18-174-40 295X195x75mm
 18-175-45 300X175x40mm
 18-176-50 300X200x50mm

18-177-55 300X250x50mm
 18-178-60 350X250x50mm
 18-179-65 350X250x75mm
 18-180-70 350X300x50mm
 18-181-75 360X270x50mm
 18-182-80 400X300x50mm
 18-183-85 450X350x50mm
 18-184-90 500X300x50mm



Instrument Trays with Strap handle Lid

18-185-05 150X100x25mm
 18-186-10 200X150x40mm
 18-187-15 200X100x50mm
 18-188-20 220X120x50mm
 18-189-25 220X150x50mm
 18-190-30 250X150x50mm
 18-191-35 250X200x40mm
 18-192-40 250X200x50mm
 18-193-45 300X200x50mm
 18-194-50 300X250x50mm
 18-195-55 350X250x50mm
 18-196-60 350X250x75mm
 18-197-65 350X300x50mm
 18-198-70 450X350x50mm



Instruments Tray with Knob Lid

18-199-05 150X100x25mm
 18-200-10 200X150x40mm
 18-201-15 200X100x50mm
 18-202-20 220X120x50mm
 18-203-25 220X150x50mm
 18-204-30 250X150x50mm
 18-205-35 250X200x40mm
 18-206-40 250X200x50mm
 18-207-45 300X200x50mm
 18-208-50 300X250x50mm
 18-209-55 350X250x50mm
 18-210-60 350X250x75mm
 18-211-65 350X300x50mm
 18-212-70 450X350x50mm



Triangular Instruments Tray
18-213-10 250x250x250x50mm



CATHER TRAY
18-214-05 200 x 60 x 40 mm
18-215-10 200 x 90 x 40 mm
18-216-15 320 x 95 x 50 mm
18-217-20 328 x 90 x 50 mm
18-218-25 365 x 90 x 50 mm
18-219-30 440 x 115 x 50 mm



KIDNEY TRAY
18-220-05 150x 90x40mm
18-221-10 170x100x40mm
18-222-15 200x 95x45mm
18-223-20 200x110x30mm
18-224-25 240x110x40mm
18-225-30 250x115x50mm
18-226-35 250x140x40mm
18-227-40 250x140x40mm
18-228-45 300x140x60mm



KIDNEY TRAY
18-229-05 150 mm
18-230-10 200 mm
18-231-15 240 mm
18-232-20 300 mm



KIDNEY TRAY WITH COVER
18-233-05 150 mm
18-234-10 200 mm
18-235-15 240 mm
18-236-20 300 mm



Kidney Tray Shallow
18-237-05 170 mm
18-238-10 220 mm
18-239-15 240 mm



Instruments Box with lid
18-240-05 170 x 70 x 30 mm
18-241-10 180 x 80 x 40 mm
18-242-15 200 x 100 x 40 mm
18-243-20 200 x 100 x 50 mm
18-244-25 220 x 120 x 50 mm
18-245-30 250 x 150 x 50 mm
18-246-35 250 x 200 x 50 mm
18-247-40 300 x 150 x 60 mm
18-248-45 300 x 200 x 50 mm
18-249-50 350 x 250 x 50 mm
18-250-55 400 x 200 x 100 mm
18-251-60 450 x 250 x 50 mm



Forceps Jar

- 18-252-05 Ø 30 x 90 mm
- 18-253-10 Ø 30 x 120 mm
- 18-254-15 Ø 50 x 100 mm
- 18-255-20 Ø 50 x 130 mm
- 18-256-25 Ø 50 x 175 mm
- 18-257-30 Ø 50 x 200 mm
- 18-258-35 Ø 75 x 100 mm
- 18-259-40 Ø 75 x 130 mm
- 18-260-45 Ø 75 x 175 mm
- 18-261-50 Ø 100 x 175 mm
- 18-262-55 Ø 100 x 200 mm



Forceps Jar with lid

- 18-263-05 Ø 30 x 90 mm
- 18-264-10 Ø 30 x 120 mm
- 18-265-15 Ø 50 x 100 mm
- 18-266-20 Ø 50 x 130 mm
- 18-267-25 Ø 50 x 175 mm
- 18-268-30 Ø 50 x 200 mm
- 18-269-35 Ø 75 x 100 mm
- 18-270-40 Ø 75 x 130 mm
- 18-271-45 Ø 75 x 175 mm
- 18-272-50 Ø 100 x 175 mm
- 18-273-55 Ø 100 x 200 mm



Thermometer Jar

- 18-274-10
Ø 25 x 100 mm



DRESSING JAR With Knob Lid

- 18-275-05 80 x 80mm
- 18-276-10 90 x 90mm
- 18-277-15 100 x 100mm
- 18-278-20 100 x 130mm
- 18-279-25 120 x 120mm
- 18-280-30 125 x 170mm
- 18-281-35 150 x 150mm
- 18-282-40 200 x 200mm



DRESSING JAR With strap Lid

- 18-283-05 80 x 80mm
- 18-284-10 90 x 90mm
- 18-285-15 100 x 100mm
- 18-286-20 100 x 130mm
- 18-287-25 120 x 120mm
- 18-288-30 125 x 170mm
- 18-289-35 150 x 150mm
- 18-290-40 200 x 200mm



GALIPOTS Capacity

- 18-291-02 2 Ounces
- 18-292-03 3 Ounces
- 18-293-04 4 Ounces
- 18-294-05 5 Ounces
- 18-295-06 6 Ounces
- 18-296-07 7 Ounces
- 18-297-08 8 Ounces



SPUTUM MUG

- 18-298-05 80 x 80 mm
- 18-299-10 100 x 50 mm
- 18-300-15 100 x 65 mm



Beaker With handle

- Capacity
- 18-301-05 1000
- 18-302-10 1200
- 18-303-15 2000



Irrigator with handle (Douche Can)

- 18-304-10 Ø 125x185mm



ENEMA CANE
Capacity
18-305-05 0.5 Ltr
18-306-10 1.5 Ltr
18-307-15 2.0 Ltr



ROUND BEDPAN
18-308-10
300 x 85 mm



BEDPAN
18-309-10 Adult
18-310-20 Child



BEDPAN
18-311-10 Adult
18-312-20 Child



URINAL - FEMALE
18-313-10



URINAL - MALE
18-314-10



Urinal Male Vertical
18-315-10



Urinal Male Horizontal
18-316-10



BUCKET WITH LID
Capacity
18-317-10 10 Ltr
18-318-12 12 Ltr
18-319-15 15 Ltr



COTTON HOLDER
18-320-10



SPRIT LAMP
18-321-10 100 ml.
18-322-12 120 ml.



SPLIT LAMP
18-323-10
100 ml.



Round Bowls
18-324-05 80 x 35 mm
18-325-10 125 x 60 mm



FUNNAL
18-326-10
100 mm



ENDO BOX ROUND
18-327-10



NEEDLE CASE
18-328-10



NEEDLE CASE
18-329-10
230 x 125 mm



MEASURING JUG
Capacity
18-330-10 1.00 Ltr
18-331-15 1.50 Ltr
18-332-20 2.00 Ltr
18-333-30 3.00 Ltr



MEDICINE CUP GRADUATED
Capacity
18-334-05 50 ml
18-335-10 60 ml
18-336-15 100 ml

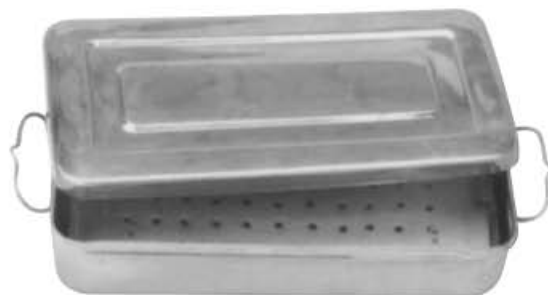


DUST BIN
18-337-10
20 Lit



PERFORATED TRAY

- 18-338-05** 180 x 80 x 40 mm
- 18-339-10** 200 x 100 x 50 mm
- 18-340-15** 250 x 125 x 40 mm
- 18-341-20** 300 x 150 x 60 mm
- 18-342-25** 350 x 175 x 75 mm
- 18-343-30** 400 x 200 x 100 mm



STERILIZING BOX

- 18-345-05** 180 x 80 x 40 mm
- 18-346-10** 200 x 100 x 50 mm
- 18-347-15** 250 x 125 x 40 mm
- 18-348-20** 300 x 150 x 60 mm
- 18-349-25** 350 x 175 x 75 mm
- 18-350-30** 400 x 200 x 100 mm



G LOVES BOX

- 18-344-10**
- 300 x 150 mm



STERILIZING BOX With Stand

- 18-351-05** 180 x 80 x 40 mm
- 18-352-10** 200 x 100 x 50 mm
- 18-353-15** 250 x 125 x 40 mm
- 18-354-20** 300 x 150 x 60 mm
- 18-355-25** 350 x 175 x 75 mm
- 18-356-30** 400 x 200 x 100 mm



ELECTRIC STERILIZING BOX

- 18-357-05** 180 x 80 x 40 mm
- 18-358-10** 200 x 100 x 50 mm
- 18-359-15** 250 x 125 x 40 mm
- 18-360-20** 300 x 150 x 60 mm
- 18-361-25** 350 x 175 x 75 mm
- 18-362-30** 400 x 200 x 100 mm



PERFORATED BOX

For With Filter

- 18-363-05** 170 x 70 x 30 mm
- 18-364-10** 180 x 80 x 40 mm
- 18-365-15** 200 x 100 x 40 mm
- 18-366-20** 200 x 100 x 50 mm
- 18-367-25** 220 x 120 x 50 mm
- 18-368-30** 250 x 100 x 50 mm
- 18-369-35** 250 x 150 x 50 mm
- 18-370-40** 250 x 200 x 50 mm
- 18-371-45** 300 x 150 x 60 mm
- 18-372-50** 300 x 200 x 50 mm
- 18-373-55** 350 x 250 x 50 mm
- 18-374-60** 400 x 200 x 100 mm
- 18-375-65** 420 x 180 x 100 mm
- 18-376-70** 450 x 250 x 150 mm
- 18-377-75** 510 x 200 x 150 mm



PERFORATED INSTRUMENTS BOX

- 18-378-05** 170 x 70 x 30 mm
- 18-379-10** 180 x 80 x 40 mm
- 18-380-15** 200 x 100 x 40 mm
- 18-381-20** 200 x 100 x 50 mm
- 18-382-25** 220 x 120 x 50 mm
- 18-383-30** 250 x 100 x 50 mm
- 18-384-35** 250 x 150 x 50 mm
- 18-385-40** 250 x 200 x 50 mm
- 18-386-45** 300 x 150 x 60 mm
- 18-387-50** 300 x 200 x 50 mm
- 18-388-55** 350 x 250 x 50 mm
- 18-389-60** 400 x 200 x 100 mm
- 18-390-65** 420 x 180 x 100 mm
- 18-391-70** 450 x 250 x 150 mm
- 18-392-75** 510 x 200 x 150 mm



INSTRUMENTS BOX

Without Clip

- 18-393-05** 170 x 70 x 30 mm
- 18-394-10** 180 x 80 x 40 mm
- 18-395-15** 200 x 100 x 40 mm
- 18-396-20** 200 x 100 x 50 mm
- 18-397-25** 220 x 120 x 50 mm
- 18-398-30** 250 x 100 x 50 mm
- 18-399-35** 250 x 150 x 50 mm
- 18-400-40** 250 x 200 x 50 mm
- 18-401-45** 300 x 150 x 60 mm
- 18-402-50** 300 x 200 x 50 mm
- 18-403-55** 350 x 250 x 50 mm
- 18-404-60** 400 x 200 x 100 mm
- 18-405-65** 420 x 180 x 100 mm
- 18-406-70** 450 x 250 x 150 mm
- 18-407-75** 510 x 200 x 150 mm



INSTRUMENT BOX

With Clip

- 18-408-05** 170 x 70 x 30 mm
- 18-409-10** 180 x 80 x 40 mm
- 18-410-15** 200 x 100 x 40 mm
- 18-411-20** 200 x 100 x 50 mm
- 18-412-25** 220 x 120 x 50 mm
- 18-413-30** 250 x 100 x 50 mm
- 18-414-35** 250 x 150 x 50 mm
- 18-415-40** 250 x 200 x 50 mm
- 18-416-45** 300 x 150 x 60 mm
- 18-417-50** 300 x 200 x 50 mm
- 18-418-55** 350 x 250 x 50 mm
- 18-419-60** 400 x 200 x 100 mm
- 18-420-65** 420 x 180 x 100 mm
- 18-421-70** 450 x 250 x 150 mm
- 18-422-75** 510 x 200 x 150 mm

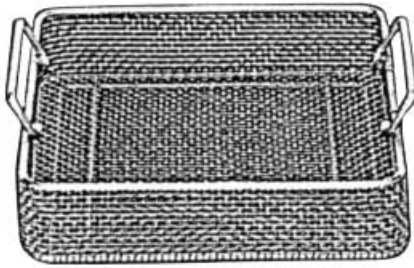


STERILIZING DRUMS Horizontal Ventilation

	Diameter	Height
	mm	mm
18-423-01	80 x 80	mm
18-424-02	120 x 100	mm
18-425-03	120 x 120	mm
18-426-04	150 x 105	mm
18-427-05	150 x 130	mm
18-428-06	150 x 150	mm
18-429-07	160 x 120	mm
18-430-08	175 x 175	mm
18-431-09	190 x 160	mm
18-432-10	190 x 190	mm
18-433-11	200 x 150	mm
18-434-12	200 x 200	mm
18-435-13	240 x 120	mm
18-436-14	240 x 160	mm
18-437-15	240 x 190	mm
18-438-16	240 x 240	mm
18-439-17	240 x 290	mm
18-440-18	290 x 120	mm
18-441-19	290 x 160	mm
18-442-20	290 x 190	mm
18-443-21	290 x 240	mm
18-444-22	290 x 290	mm
18-445-23	290 x 340	mm
18-446-24	300 x 250	mm
18-447-25	340 x 160	mm
18-448-26	340 x 190	mm
18-449-27	340 x 240	mm
18-450-28	340 x 290	mm
18-451-29	340 x 340	mm
18-452-30	390 x 150	mm
18-453-31	390 x 200	mm
18-454-32	390 x 240	mm
18-455-33	390 x 290	mm
18-456-34	390 x 340	mm
18-457-35	390 x 390	mm

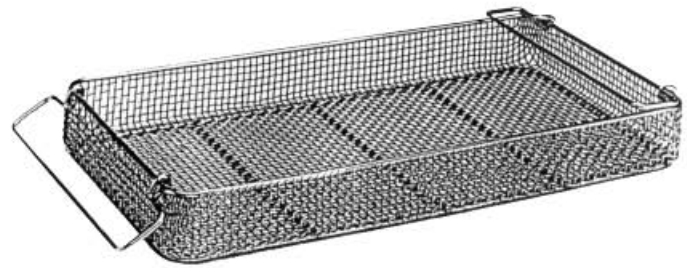
STERILIZING DRUMS "Filter" Vertical Ventilation

	Diameter	Height
	mm	mm
18-458-01	80 x 80	mm
18-459-02	120 x 100	mm
18-460-03	120 x 120	mm
18-461-04	150 x 105	mm
18-462-05	150 x 130	mm
18-463-06	150 x 150	mm
18-464-07	160 x 120	mm
18-465-08	175 x 175	mm
18-466-09	190 x 160	mm
18-467-10	190 x 190	mm
18-468-11	200 x 150	mm
18-469-12	200 x 200	mm
18-470-13	240 x 120	mm
18-471-14	240 x 160	mm
18-472-15	240 x 190	mm
18-473-16	240 x 240	mm
18-474-17	240 x 290	mm
18-475-18	290 x 120	mm
18-476-19	290 x 160	mm
18-477-20	290 x 190	mm
18-478-21	290 x 240	mm
18-479-22	290 x 290	mm
18-480-23	290 x 340	mm
18-481-24	300 x 250	mm
18-482-25	340 x 160	mm
18-483-26	340 x 190	mm
18-484-27	340 x 240	mm
18-485-28	340 x 290	mm
18-486-29	340 x 340	mm
18-487-30	390 x 150	mm
18-488-31	390 x 200	mm
18-489-32	390 x 240	mm
18-490-33	390 x 290	mm
18-491-34	390 x 340	mm
18-492-35	390 x 390	mm



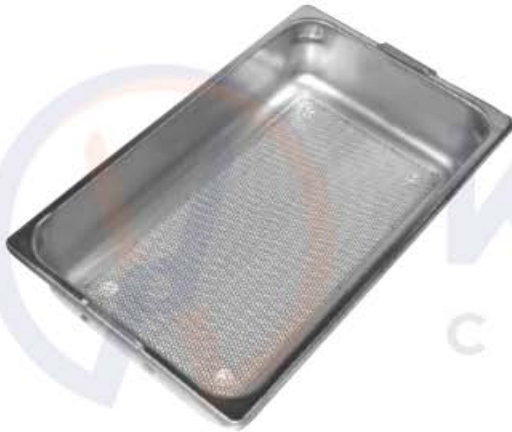
MESH BASKET

18-493-05 240 x 258 x 50 mm
18-494-10 250 x 240 x 100 mm
18-495-15 240 x 250 x 60mm



MESH BASKET

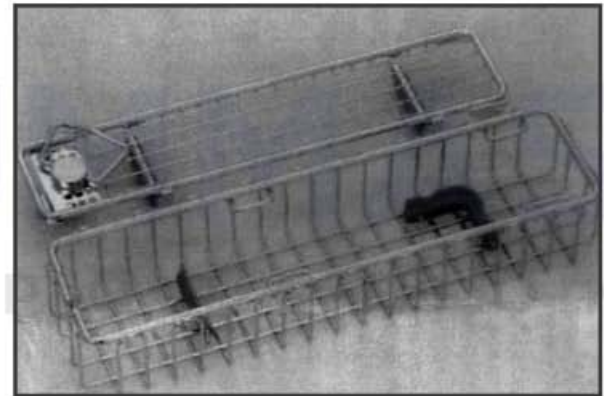
18-496-05 480 x 258 x 50 mm
18-497-10 480 x 258 x 100 mm
18-498-15 520 x 258 x 60mm
18-499-20 520 x 258 x 70mm
18-500-25 450 x 340 x 70mm
18-501-30 320 x 230 x 70mm



MESH BASKET

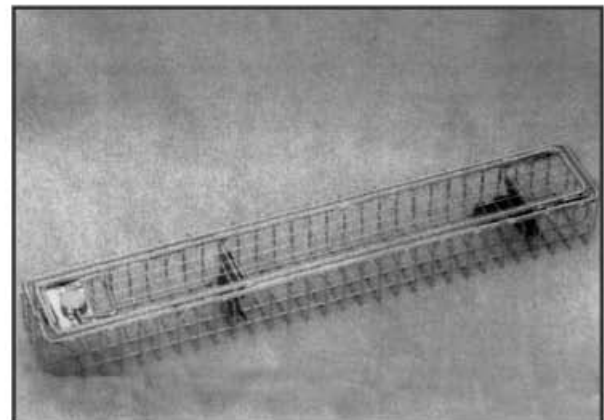
With Perforated Sheet Side

18-502-05 230 x 130 x 50 mm
18-503-10 230 x 130 x 60 mm
18-504-15 240 x 130 x 50 mm
18-505-20 240 x 130 x 60 mm
18-506-25 240 x 250 x 50 mm
18-507-30 240 x 250 x 60 mm
18-508-35 480 x 250 x 50 mm
18-509-40 480 x 250 x 60 mm
18-510-45 480 x 250 x 70 mm
18-511-50 300 x 300 x 50 mm
18-512-55 350 x 350 x 60 mm
18-513-60 470 x 400 x 60 mm
18-514-65 480 x 480 x 50 mm
18-515-70 480 x 480 x 60 mm
18-516-75 500 x 300 x 50 mm
18-517-80 520 x 300 x 50 mm
18-518-85 520 x 300 x 60 mm
18-519-90 550 x 430 x 50 mm
18-520-95 600 x 300 x 60 mm



ARTHROSCOPE BASKET

18-521-10 290 x 80 x 52 mm



ENDOSCOPE BASKET

18-522-05 460 x 80 x 52 mm
18-523-10 660 x 80 x 52 mm
18-524-15 670 x 80 x 52 mm



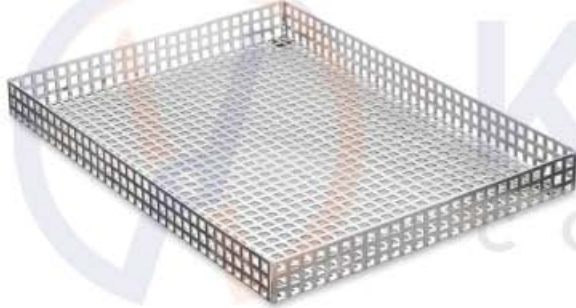
MESH BASKET

18-525-05 240 x 250 x 50 mm
 18-526-10 240 x 250 x 70 mm
 18-527-15 240 x 254 x 50 mm
 18-528-20 480 x 250 x 50 mm
 18-529-25 480 x 250 x 70 mm
 18-530-30 480 x 250 x 100 mm
 18-531-35 480 x 254 x 50 mm
 18-532-40 510 x 254 x 50 mm



Wire Basket

18-533-10
 485mm/255/100mm



Mesh Tray
 18-534-10
 24x32x3cm



WIRE BASKET
 18-535-10

405mm / 255 mm/ 100 mm



SILICON MAT
 18-536-10

300mm / 300mm



18-537-05
Perforated tray Without Lid 320mm x 263mm x 63.5mm
18-538-10
Perforated tray Without Lid 320mm x 263mm x 101mm

18-539-10
Sterilization Tray Set
320mm x 263mm x 101mm

KUMMAS
CORPORATION



MOFTECH CONTAINER
18-540-10
465mm / 280 mm / 150 mm
Red



DAVIS
18-541-16 16 cm
18-542-20 20 cm
18-543-24 24 cm



UTILITY
18-544-20 20 cm
18-545-28 28 cm



Sterilizing Forceps
Three Prongs
18-546-20 20 cm
18-547-25 25 cm
18-548-30 30 cm



ROGGE
18-549-27 27 cm



CHEATLE
Box Joint
18-550-27 27 cm



CHEATLE
Screw Joint
18-551-27 27 cm



CHEATLE
Serrated Jaw
18-552-28 28.5 cm



HARRISON
18-553-30 30 cm
18-554-35 35 cm



HARRISON
18-555-30 30 cm



18-556-12
BUNT Forceps Holder 12cm



MAYO
18-557-12
12.5 cm



MAYO
18-558-14
14 cm



18-559-12
Instrument
Sterilizing Rack



18-560-01
WORCESTER Instrument Holder
33cm x 7.5cm
18-561-02
WIRE instrument Rack ,
Height- 8cm , Base- 10.5cm



WEINSTEIN Instrument Sterilizing Rack
18-562-01 Small, 14cm x 7.5cm
18-563-02 Large, 28.5cm x 7.5cm



Instrument Holders stringers "T" Bar
18-564-01 15.2cm, 15.2cm
18-565-02 30.5cm, 30.5cm



Instrument Stringer Hook-Lock		
	width	Length
18-566-01	63.5mm	152mm
18-567-02	63.5mm	203mm
18-568-03	63.5mm	254mm
18-569-04	63.5mm	305mm
18-570-05	63.5mm	355mm
18-571-06	63.5mm	406mm
18-572-07	63.5mm	457mm

Instrument Stringer Center-Lock		
	width	Length
18-573-01	63.5mm	152mm
18-574-02	63.5mm	203mm
18-575-03	63.5mm	254mm
18-576-04	63.5mm	305mm
18-577-05	63.5mm	355mm
18-578-06	63.5mm	406mm
18-579-07	63.5mm	457mm

Instrument Stringer Intra-Lock		
	width	Length
18-580-01	63.5mm	152mm
18-581-02	63.5mm	203mm
18-582-03	63.5mm	254mm
18-583-04	63.5mm	305mm
18-584-05	63.5mm	355mm
18-585-06	63.5mm	406mm
18-586-07	63.5mm	457mm

Instrument Stringer Pin-Lock		
	width	Length
18-587-01	63.5mm	152mm
18-588-02	63.5mm	203mm
18-589-03	63.5mm	254mm
18-590-04	63.5mm	305mm
18-591-05	63.5mm	355mm
18-592-06	63.5mm	406mm
18-593-07	63.5mm	457mm